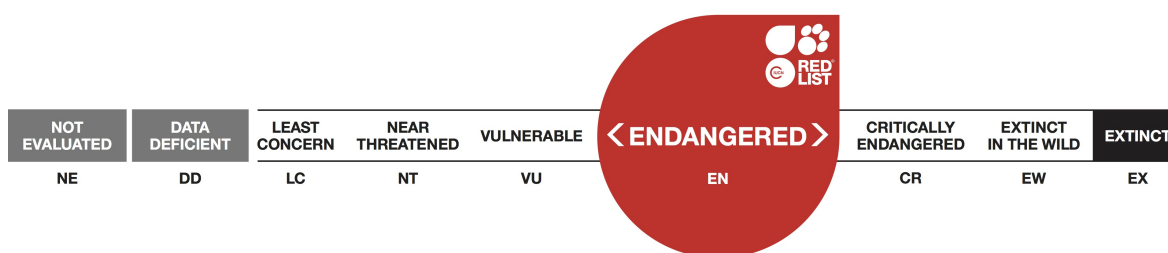


Acanthodactylus ahmaddisii

Assessment by: Werner, Y., Disi, M. & Mousa Disi, A.M.



View on www.iucnredlist.org

Citation: Werner, Y., Disi, M. & Mousa Disi, A.M. 2006. *Acanthodactylus ahmaddisii*. *The IUCN Red List of Threatened Species 2006*: e.T61452A12488476.

<http://dx.doi.org/10.2305/IUCN.UK.2006.RLTS.T61452A12488476.en>

Copyright: © 2015 International Union for Conservation of Nature and Natural Resources

Reproduction of this publication for educational or other non-commercial purposes is authorized without prior written permission from the copyright holder provided the source is fully acknowledged.

Reproduction of this publication for resale, reposting or other commercial purposes is prohibited without prior written permission from the copyright holder. For further details see [Terms of Use](#).

The IUCN Red List of Threatened Species™ is produced and managed by the [IUCN Global Species Programme](#), the [IUCN Species Survival Commission \(SSC\)](#) and [The IUCN Red List Partnership](#). The IUCN Red List Partners are: [BirdLife International](#); [Botanic Gardens Conservation International](#); [Conservation International](#); [Microsoft](#); [NatureServe](#); [Royal Botanic Gardens, Kew](#); [Sapienza University of Rome](#); [Texas A&M University](#); [Wildscreen](#); and [Zoological Society of London](#).

If you see any errors or have any questions or suggestions on what is shown in this document, please provide us with [feedback](#) so that we can correct or extend the information provided.

Taxonomy

Kingdom	Phylum	Class	Order	Family
Animalia	Chordata	Reptilia	Squamata	Lacertidae

Taxon Name: *Acanthodactylus ahmaddisii* Werner, 2004

Assessment Information

Red List Category & Criteria: Endangered B1b(i,ii,iii)c(iv) [ver 3.1](#)

Year Published: 2006

Date Assessed: January 31, 2006

Justification:

Listed as Endangered because its extent of occurrence is less than 5,000 km², there is continuing decline in the extent and quality of its habitat, and there are severe fluctuations in the number of mature individuals.

Geographic Range

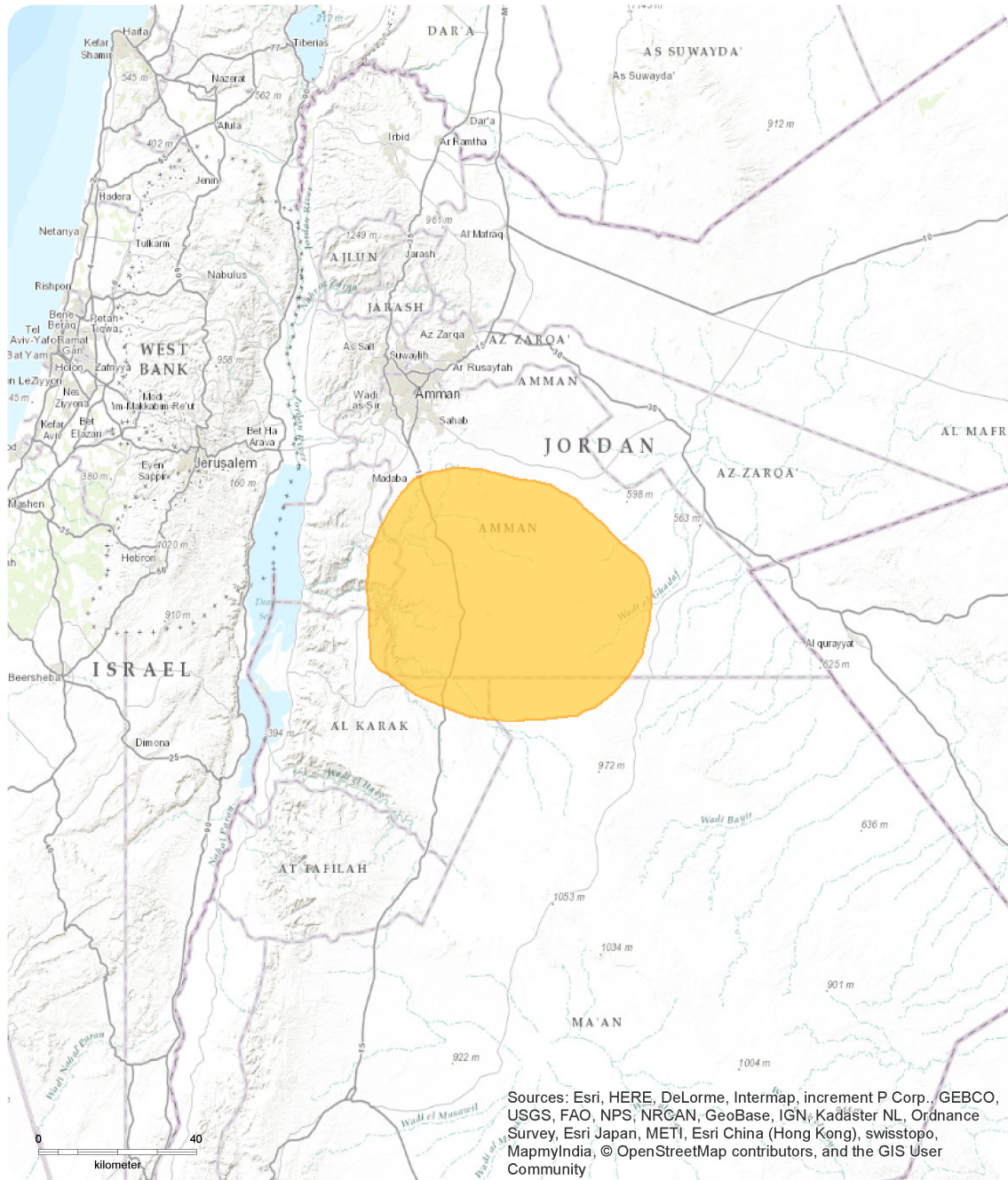
Range Description:

This is a recently described species from central Jordan. It is believed to have a relatively small range and is thought to be restricted to a specific habitat type.

Country Occurrence:

Native: Jordan

Distribution Map



Acanthodactylus ahmaddisii

Range
 Extant (resident)

Compiled by:
 IUCN (International Union for Conservation of Nature)



The boundaries and names shown and the designations used on this map do not imply any official endorsement, acceptance or opinion by IUCN.



Population

It is relatively common within suitable habitat. There are substantial fluctuations in population size related to rainfall.

Current Population Trend: Decreasing

Habitat and Ecology (see Appendix for additional information)

It is found on hard clay soils, with small shrubs, in semi-desert. It is an egg-laying species.

Systems: Terrestrial

Threats (see Appendix for additional information)

Much of the habitat of this species (in particular the hard crust substrate) is threatened, or has been destroyed, by intensive agriculture, urbanisation and trampling by grazing animals.

Conservation Actions (see Appendix for additional information)

It is not believed to occur in any protected areas.

Credits

Assessor(s): Werner, Y., Disi, M. & Mousa Disi, A.M.

Reviewer(s): Stuart, S.N. & Cox, N. (Global Reptile Assessment)

Bibliography

IUCN. 2006. *2006 IUCN Red List of Threatened Species*. www.iucnredlist.org. Downloaded on 04 May 2006.

Werner, Y.L. 2004. A new species of the *Acanthodactylus pardalis* group (Reptilia: Lacertidae) from Jordan. *Zoology in the Middle East* 32: 39–46

Citation

Werner, Y., Disi, M. & Mousa Disi, A.M. 2006. *Acanthodactylus ahmaddisii*. *The IUCN Red List of Threatened Species 2006*: e.T61452A12488476.

<http://dx.doi.org/10.2305/IUCN.UK.2006.RLTS.T61452A12488476.en>

Disclaimer

To make use of this information, please check the [Terms of Use](#).

External Resources

For [Images and External Links to Additional Information](#), please see the Red List website.

Appendix

Habitats

(<http://www.iucnredlist.org/technical-documents/classification-schemes>)

Habitat	Season	Suitability	Major Importance?
3. Shrubland -> 3.5. Shrubland - Subtropical/Tropical Dry	-	Suitable	-
0. Root -> 18. Unknown	-	Suitable	-

Threats

(<http://www.iucnredlist.org/technical-documents/classification-schemes>)

Threat	Timing	Scope	Severity	Impact Score
1. Residential & commercial development -> 1.1. Housing & urban areas	Ongoing	-	-	-
	Stresses:	1. Ecosystem stresses -> 1.1. Ecosystem conversion 1. Ecosystem stresses -> 1.2. Ecosystem degradation		
2. Agriculture & aquaculture -> 2.1. Annual & perennial non-timber crops -> 2.1.3. Agro-industry farming	Ongoing	-	-	-
	Stresses:	1. Ecosystem stresses -> 1.1. Ecosystem conversion 1. Ecosystem stresses -> 1.2. Ecosystem degradation		
2. Agriculture & aquaculture -> 2.3. Livestock farming & ranching -> 2.3.1. Nomadic grazing	Ongoing	-	-	-
	Stresses:	1. Ecosystem stresses -> 1.1. Ecosystem conversion 1. Ecosystem stresses -> 1.2. Ecosystem degradation		

Conservation Actions Needed

(<http://www.iucnredlist.org/technical-documents/classification-schemes>)

Conservation Actions Needed
1. Land/water protection -> 1.1. Site/area protection
2. Land/water management -> 2.1. Site/area management

Research Needed

(<http://www.iucnredlist.org/technical-documents/classification-schemes>)

Research Needed
1. Research -> 1.2. Population size, distribution & trends
1. Research -> 1.3. Life history & ecology

Research Needed
1. Research -> 1.5. Threats
1. Research -> 1.6. Actions
3. Monitoring -> 3.1. Population trends

The IUCN Red List Partnership



The IUCN Red List of Threatened Species™ is produced and managed by the [IUCN Global Species Programme](#), the [IUCN Species Survival Commission \(SSC\)](#) and [The IUCN Red List Partnership](#). The IUCN Red List Partners are: [BirdLife International](#); [Botanic Gardens Conservation International](#); [Conservation International](#); [Microsoft](#); [NatureServe](#); [Royal Botanic Gardens, Kew](#); [Sapienza University of Rome](#); [Texas A&M University](#); [Wildscreen](#); and [Zoological Society of London](#).