

RESEARCH

Open Access



Anticipatory parental effects in a subtropical lizard in response to experimental warming

Bao-Jun Sun¹, Yang Wang², Yong Wang^{1,3}, Hong-Liang Lu³ and Wei-Guo Du^{1,4*}

Abstract

Parental effects may produce adaptive or maladaptive plasticity that either facilitates persistence or increases the extinction risk of species and populations in a changing climate. However, empirical evidence of transgenerational adaptive plastic responses to climate change is still scarce. Here we conducted thermal manipulation experiments with a factorial design in a Chinese lacertid lizard (*Takydromus septentrionalis*) to identify the fitness consequences of parental effects in response to climate warming. Compared to present climate conditions, a simulated warming climate significantly advanced the timing of oviposition, depressed the immune capability of post-partum females, and decreased the hatching success of embryos, but did not affect female reproductive output (clutch size and egg mass). These results indicate that maternal warming negatively affects female health, and embryonic hatchability. More interestingly, we found that offspring from parents exposed to warming environments survived well under a simulated warming climate, but not under a present climate scenario. Accordingly, our study demonstrates anticipatory parental effects in response to a warming climate in an ectothermic vertebrate. However, the fitness consequences of this parental effect will depend on future climate change scenarios.

Keywords: Climate change, Growth, Hatchling, Parental effect, Reptile, Survival, Thermal adaptation, Transgenerational phenotypic plasticity

Introduction

The global climate change imposes extensive and profound impacts on species, populations and ecosystems [1–3]. In response to changing climate, some species have shifted their distribution to higher latitudes or elevations to track more suitable habitats for their survival and reproduction. Other species have stayed in their current habitats and instead display phenotypic plasticity (e.g., shifts in phenology, physiological acclimation and life-history changes) and/or genetic adaptation in response to climate change [4–8]. Understanding the processes that determine the sensitivity, resilience, and adaptability of a species is critical for predicting its vulnerability to climate change [9–11].

Phenotypic plasticity, which is the ability of a genotype to express diverse phenotypes in different environmental conditions, provides organisms with the capability to alter their phenotypes in response to environmental changes [12, 13]. Phenotypic plasticity is not only a fast process that allows organisms to cope with climate change in the short-term, but also could have long-term effects on species fitness. For example, environmentally induced plasticity could affect offspring fitness through diverse mechanisms such as transgenerational epigenetic inheritance and genetic assimilation [14, 15]. The ‘parental effect’ is a special case of phenotypic plasticity whereby the parental environment substantially affects a diverse array of offspring phenotypes (e.g., morphology, behavior, physiology, and life-history traits), which in turn determine the rapid response of populations to changing environments [16–24]. Parental effects may be adaptive and enable parents to adjust offspring phenotypes (e.g. growth and survival) to local environment changes [25, 26]. Alternatively, parental effects may be

* Correspondence: duweiguo@ioz.ac.cn

¹Key Laboratory of Animal Ecology and Conservation Biology, Institute of Zoology, Chinese Academy of Sciences, Beijing 100101, People's Republic of China

⁴Center for Excellence in Animal Evolution and Genetics, Chinese Academy of Sciences, Kunming 650223, China

Full list of author information is available at the end of the article



neutral or even detrimental (negative physiological side effects) to the survival of species or populations in a changing environment [16]. In either case, parental effects are likely to have far-reaching ecological and evolutionary consequences in different circumstances [27, 28].

The study of the relationship between phenotypic plasticity and global climate change has attracted increasing attention in the last few decades [29–33], while numerous studies have demonstrated substantial plastic responses of physiological and life history traits to spatial and temporal heterogeneity in environmental conditions in a diversity of plants and animals [13, 20, 34–37]. A growing number of theoretical predictions and early empirical evidence suggest that organisms might exhibit adaptive responses to climate change via transgenerational phenotypic plasticity (parental effects) that can mount fast responses, in addition to those intragenerational (fixed developmental or reversible acute) plasticity. This, in turn, suggests that in addition to evolutionary adaptation over longer time scales, plasticity driven by parental effects could be a highly effective mechanism to buffer populations against rapid environmental change [8, 38–40]. The ecological and evolutionary consequences of parental effects with respect to climate change largely depend on the degree to which parental and offspring environments are matched. The majority of previous studies on transgenerational plastic responses induced by climate change aimed to identify the existence of parental effects, but with limited efforts focused on elucidating the fitness consequences of parental effects in different environments [31, 38, 40]. Empirical tests of the adaptive significance of parental effects in the context of climate change requires a fully factorial experimental design that manipulates both parent and offspring environments [18, 22].

Reptiles are excellent models for studies on the adaptive significance of parentally mediated changes in offspring life histories due to climate warming, though such studies are still rare due to logistical difficulties (e.g. manipulation of a warming scenario in large enclosures) (but see [41]). As ectothermic vertebrates, reptiles have intrinsically restricted abilities of long-distance dispersal and are highly dependent upon external environmental conditions and therefore particularly sensitive to climatic change [42, 43]. In addition, environmental temperatures experienced by gravid female reptiles have profound effects on embryonic development and offspring phenotypes [18, 19, 40, 44, 45].

To identify the adaptive significance of parentally mediated changes in offspring life history in response to climate change, we conducted simulated warming experiments (present and future warming climate on parents × present and future warming climate on offspring). We then measured the effect of these warming treatments

on female reproductive output and body condition, embryonic development, and offspring phenotypes (locomotor performance, growth and survival) in a lacertid lizard, *Takydromus septentrionalis*. Parents and their offspring would respond to warming climate scenarios in a diversity of ways. For example, warming could benefit parents but not offspring, or benefit offspring but not parents. Here we mainly focus on the following three hypotheses. First, if a warming climate improves growth, reproduction, and survival of lizards as seen in some temperate species [46, 47], then parents and offspring would perform better overall in the warming climate than in the present climate. Second, if a warming climate has negative effects on offspring as shown in some other lizards [42, 43], then parents and offspring would perform worse overall in the warming climate than in the present climate. Third, if parents are capable of adjusting offspring phenotype via predictive adaptive plasticity, offspring would perform better in thermal environments similar to that of their parents, as suggested by the environmental matching hypothesis [25, 48–51].

Materials and methods

Study species

The northern grass lizard, *Takydromus septentrionalis*, is a lacertid lizard (up to 80 mm snout-vent length [SVL]), which is widely distributed in central and southern China [52]. In this species, selected body temperature averages 30 °C, while field body temperatures average 28.3 °C in May and 32.4 °C in July for a population from Zhoushan islands, Zhejiang [53]. As an oviparous species, females produce multiple clutches with a clutch size of 1–5 eggs from April to July [54]. As is typical of developing embryos in many oviparous squamates, *T. septentrionalis* embryos are retained in utero for approximately one third of total developmental time, and are almost fully developed (stage 25–26) at oviposition [55, 56]. The gravid period is likely over 20 days and the mean incubation period at 24 °C (roughly the mean temperatures of May and Jun) is approximately 45 days in this species [57]. Thermal conditions experienced by females affect clutch frequency but not clutch size or offspring size [19, 58]. Incubation at high temperatures (> 30 °C) reduces hatching success and produces hatchlings that are smaller in size, and that presents slower locomotor speeds compared to those incubated at lower temperatures [57].

Experimental design and thermal treatments

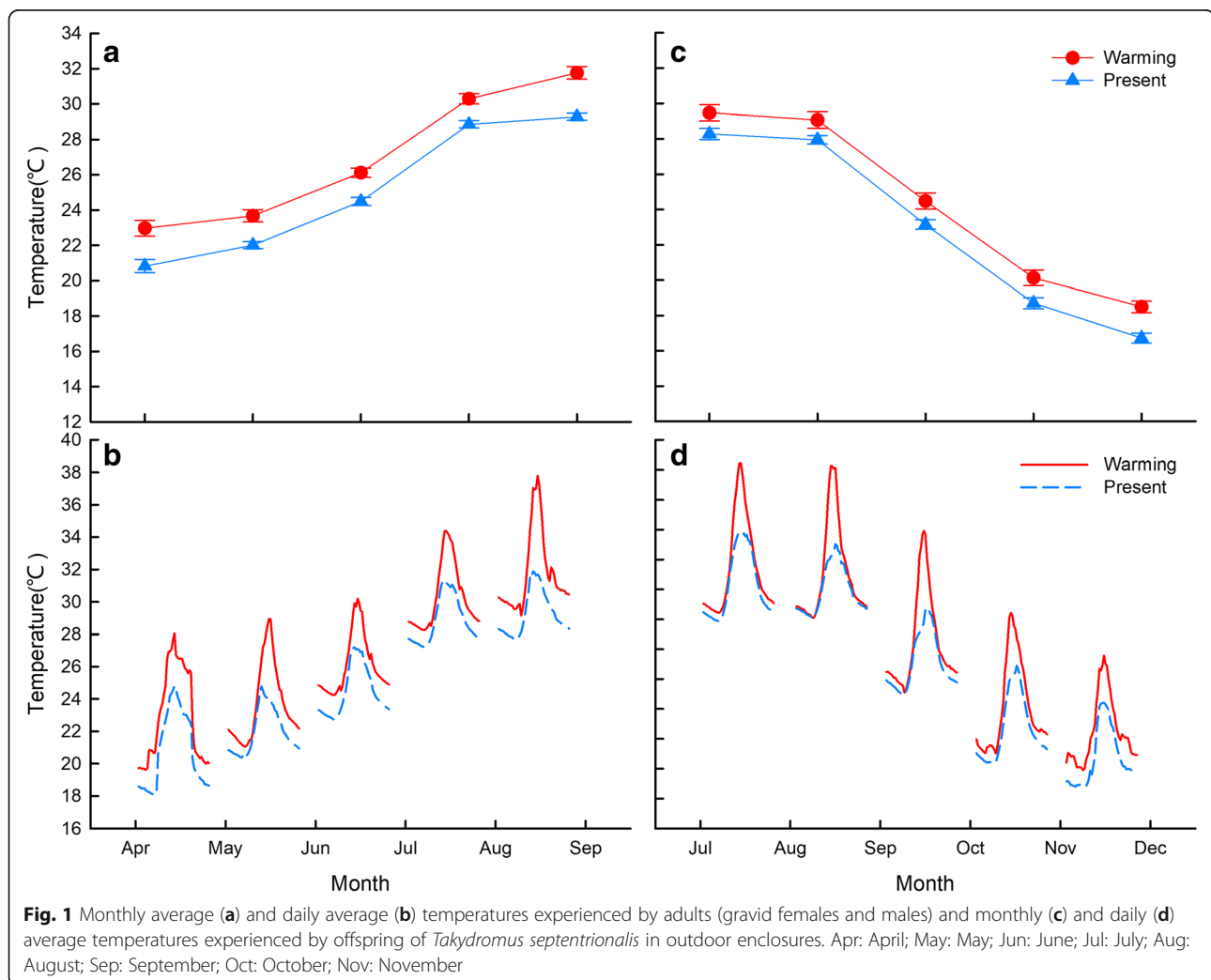
By the end of the current century, the global mean surface temperature is predicted to increase 0.3–4.8 °C, depending on various global emissions scenarios [59]. We designed a factorial experiment [two parental thermal treatments (Parental warming climate, PWC; Parental

present climate, PPC) × two offspring thermal treatments (Offspring warming climate, OWC; Offspring present climate, OPC) to identify the effect of parental thermal conditions on female reproductive traits, as well as the effect of parental and offspring thermal conditions on offspring traits. The parental and offspring thermal experiments were carried out in eight outdoor enclosures (3 × 3 × 1 m) with natural vegetation, which were built in Hangzhou, Zhejiang (30° 27' N, 120° 20' E). Four enclosures were half-covered with a shade net to mimic tree shade in the natural habitat of this species, and used as present climate enclosures to represent the current climate. Another four enclosures were used for the warming climate treatment, over which we suspended two infrared heaters (1000 W, NSB-10TQ13; Xianfeng Instrument Ltd., Zhejiang, China), 1 m above the enclosure ground level. Ambient temperatures within the enclosures were recorded every 30 min using thermochron iButtons (DS1921, MAXIM Integrated Products Ltd.,

Texas, USA; diameter 15 mm, height 6 mm; $n = 3$ in each enclosure). From April to early November, the average ambient temperature was 1.7°C or 1.4°C higher in the warming climate than the present climate treatments for parents (Apr to Aug) or offspring (Jul to Nov) (Fig. 1; see Results for the details of thermal regimes).

Female collection, reproduction and egg incubation

During the initial stages of reproductive season (From late March to early April), 60 adult *T. septentrionalis* (40 females and 20 males) were captured from Zhoushan islands (30° 09' N 121° 94' E) in Zhejiang province of eastern China. This area has an average annual temperature of 16.7°C and average precipitation is 1222.6 mm per year (<http://data.cma.cn/>). The collected lizards were transferred to our laboratory in Hangzhou, where the enclosures located. Mean daily temperatures are very similar in the two sites of Zhoushan and Hangzhou during both the breeding season (April–



November) and the entire year (see details in Additional file 1: Figure S1). Lizards were individually marked by toe-clip, measured (snout-vent length [SVL] ± 1 mm) and weighed (± 0.001 g). We then assigned adults to two present climate and two warming climate enclosures randomly in early April, with 10 females and 5 males in each outdoor enclosure. One female from the present climate treatment escaped during the experiment and was therefore excluded from subsequent analysis. Food (larvae of *Tenebrio molitor* and crickets) and water were provided ad libitum. Active body temperatures of lizards measured on May 1st verified that lizards exposed to the warming climate treatment had higher body temperatures than those from the present climate treatment (Additional file 1: Figure S2). Females were checked for gravidity every week, and females with oviductal eggs were then transferred to small containers (200 \times 150 \times 200 mm) filled with a 2-cm deep substrate of moist sand for oviposition. The females laid their eggs within three days, and each container was checked three times a day for freshly laid eggs. Once found, clutch size was recorded and all eggs were promptly weighed (± 0.001 g). The eggs ($n = 347$) were then half-buried in moist vermiculate (-220 kPa) [60] inside small boxes (150 \times 80 \times 50 mm) and incubated at 24°C. We added water to the substrate regularly to compensate for evaporative loss and water absorbed by eggs. We also moved the boxes among shelves every two days to minimize any effects of thermal gradients inside the incubator (Binder 240, Germany). The postpartum females were measured (± 1 mm) and weighed (± 0.001 g) and returned to their original enclosures. The females produced multiple (1–9) clutches of eggs when they were kept in the enclosures during the reproductive season from early April to August. Eggs from early clutches of 39 females before August were used in the incubation experiment, while eggs from later clutches in August were unfertilized and thus excluded from the incubation, but still counted as reproductive output.

Body condition and cellular immune response of postpartum females

At the end of the reproductive season (August), we measured (± 1 mm) and weighed (± 0.001 g) the postpartum females again to evaluate the effects of the two climate treatments on their body condition (using the ratio of body mass to SVL as an index of body condition). Then we assessed their cellular immune response by administering an injection (20 μ L) of 50 mg phytohemagglutinin (PHA) into the right foot of postpartum *T. septentrionalis* females ($n = 30$). Thickness of the right and left foot (± 1 mm) was measured 24 h after the PHA injection. The difference in thickness between the right and left foot is considered as the index of immune response [61].

Body size, locomotor performance, growth rate and survival of offspring

After the first hatchling emerged, we checked the boxes three times a day for newly-hatched lizards. We calculated hatching success as the percentage of eggs that hatched successfully, and incubation period as the days from oviposition to hatching. We measured (± 1 mm) and weighed (± 0.001 g) each hatchling, and assessed its locomotor performance immediately by running the lizards along a 2-m-long wooden racetrack. To standardize body temperatures of lizards prior to each locomotor trial hatchlings were acclimated in an incubator at 30°C for 30 min. Locomotor performance of each lizard was recorded with a Panasonic video camera (NV-GS38). Videotapes were then examined to determine measures of sprint speed over the fastest 200-mm interval and average speed over a 500-mm interval.

After the locomotor performance test, we assigned the hatchlings from each clutch as evenly as possible to two present climate and two warming climate enclosures. The hatchlings were kept in the enclosures from late June to November. Food (larvae of *Tenebrio molitor* and crickets) and water were provided ad libitum. Every two weeks after birth, the hatchlings were recaptured from enclosures and re-measured for SVL (± 0.01 mm) and re-weighed (± 0.001 g). Growth rates of hatchlings were calculated using the growth rate constant K from the Gompertz model, which represented the fastest absolute growth during the experiment [62]. Date of death for each offspring was recorded, and offspring survival (an important indicator of fitness) was assessed over the 5 months from birth.

Statistical analysis

All analyses were conducted using SPSS Statistics software (v22; IBM Corporation, 2014). Data were normalized by log-transformation when necessary. The difference in ambient temperature between the present climate and warming climate thermal treatments was tested using generalized linear mixed models, enclosure ID as the random effects. The effect of parental thermal treatment on female body condition, immune response and reproductive traits were evaluated using mixed-model ANOVAs, with parental thermal condition as the fixed effects, and female identity and enclosure as the random effects. The effects of parental thermal treatment on hatching success was evaluated by generalized linear mixed models, with a logit link and the binomial family, female identity and enclosure as the random effects. The effects of parental and offspring thermal treatments (and their interaction) on growth rates and locomotor performance of offspring were evaluated by mixed-model ANOVAs, with parental and offspring thermal conditions as the fixed effects, and female

identity and treatment enclosures of females and offspring as random effects. A stepwise cox regression analysis was used to detect the effect of parental and offspring thermal treatments on offspring survival.

Results

Thermal environments experienced by parents and offspring

We conducted the parental warming treatment experiments during the breeding season from April to August. Adults from the warming climate treatment experienced an average temperature of 25.93 ± 0.35 °C, which was 1.7 °C higher than that of the present climate treatment (24.26 ± 0.28 °C; $t = 25.90$, $df = 239$, $p < 0.001$). The offspring warming treatment experiment was initiated after hatching and continued until hibernation (from July to November). Offspring from the warming climate treatment experienced an average temperature of 24.33 ± 0.43 °C, which was 1.4 °C higher than that of the present climate treatment (22.96 ± 0.28 °C; $t = 16.02$, $df = 239$, $p < 0.001$; Fig. 1).

Reproductive traits, hatching success, and incubation period

The parental thermal environment significantly affected oviposition date of the first clutch. Females from the warming climate treatment laid eggs 6 days (May 8th vs. May 14th) earlier on average than did females from the present climate treatment ($F_{1,37} = 4.56$, $P = 0.04$). However, parental thermal environment did not affect the majority of reproductive traits measured in our study, including clutch frequency, annual fecundity, total clutch mass, and reproductive output of each female (clutch size, clutch mass and egg mass; Table 1).

Additionally, parental thermal treatment significantly affected hatching success of eggs ($t = -5.401$, $df = 345$, $P < 0.01$), with lower hatching success for eggs from the warming climate treatment than for those from the present climate treatment ($55 \pm 6\%$ vs. $83 \pm 4\%$) (Fig. 2a). In contrast, parental thermal treatment did not significantly affect incubation period (45.62 ± 0.14 days for warming treatment vs. 46.07 ± 0.11 days for present climate treatment; $F_{1, 209} = 3.17$, $P = 0.221$).

Body condition and cellular immune response of postpartum females

Parental thermal treatment did not influence the body condition of postpartum females ($F_{1,150} = 9.113$, $P = 0.131$), but significantly affected the PHA immune response of females ($F_{1,16} = 9.765$, $P = 0.007$), with a weaker cellular immune response in females from the warming climate compared to females from the present climate treatment (Fig. 2b).

Body size, locomotion, growth, and survival of offspring

Parental thermal treatment did not affect hatchling phenotypes including body size, body mass and locomotor performance (Table 2). Neither parental or offspring thermal treatment affected growth rate of hatchlings in terms of SVL (Parental: $F_{1,271} = 0.12$, $P = 0.76$; Offspring: $F_{1,1846} = 0.07$, $P = 0.80$; Interaction: $F_{1,1846} = 0.21$, $P = 0.65$) or body mass (Parental: $F_{1,382} = 0.85$, $P = 0.41$; Offspring: $F_{1,1416} = 0.04$, $P = 0.95$; Interaction: $F_{1,1416} = 0.22$, $P = 0.65$; Fig. 3). In contrast, parental thermal treatment significantly affected the survival of offspring, with lower survival rates for offspring from the parental warming climate treatment than for those from the present climate treatment (Wald $\chi^2 = 10.474$, $P = 0.001$; Fig. 4). However, parental and offspring thermal treatments had a significant interaction effect on offspring survival, with the lowest survival rates for offspring that experienced mismatched thermal environments (i.e., parental warming climate \times offspring present climate) (Wald $\chi^2 = 5.856$, $P = 0.016$; Fig. 4).

Discussion

Although field enclosures provided relatively simple conditions compared to the complex environments that lizards experienced in nature habitats (e.g. food limitation and predation risk were eliminated), our study demonstrated that a simulated warming climate not only significantly affected female reproductive traits and egg hatchability, but also can, according to the scenario, have long-term effects on offspring survival in lizards. A warming climate advanced female reproductive phenology, but did not affect clutch size and offspring size. The low egg hatchability of females from the simulated warming climate indicated negative effects of climate warming on female reproduction in lizards. Moreover,

Table 1 Reproductive output of female *Takydromus septentrionalis* following different thermal treatments

Trait	Present climate	Warming climate	Mixed-model ANOVA
Clutch frequency	6.84 ± 0.48	7.00 ± 0.46	$F_{1, 200} = 0.22$, $P = 0.90$
Annual fecundity	20.35 ± 1.60	18.80 ± 1.55	$F_{1, 200} = 0.33$, $P = 0.21$
Total clutch mass (g)	6.49 ± 0.52	6.23 ± 0.51	$F_{1, 200} = 0.06$, $P = 0.83$
Clutch size	2.91 ± 0.08	2.68 ± 0.08	$F_{1, 204} = 4.69$, $P = 0.16$
Clutch mass (g)	0.93 ± 0.03	0.87 ± 0.03	$F_{1, 206} = 4.05$, $P = 0.18$
Egg mass (g)	0.33 ± 0.01	0.33 ± 0.01	$F_{1, 201} = 0.06$, $P = 0.83$

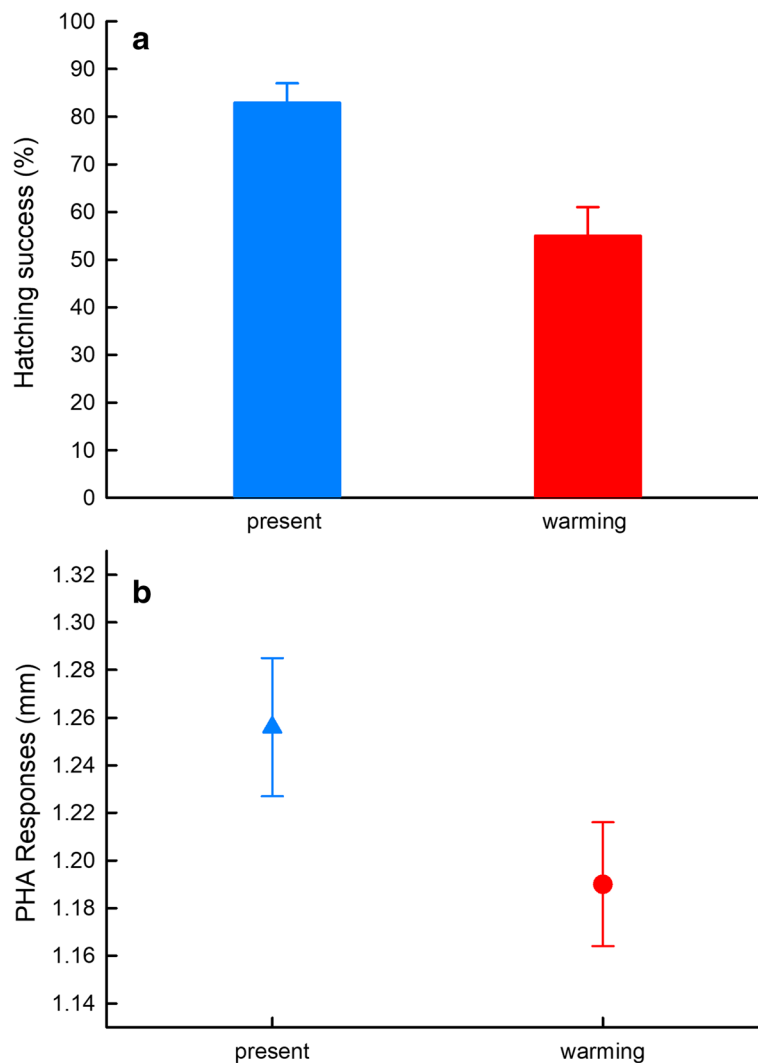


Fig. 2 Hatching success of embryos (a) and female phytohemagglutinin (PHA) response (b) of *Takydromus septentrionalis* following exposure to different thermal treatments

offspring survival was higher when a matching environment was experienced by parents and offspring compared to when parents and offspring were exposed to a mismatching environment (namely the PWC × OPC treatments, but not the PPC × OWC treatments), partially giving support to the environmental matching hypothesis. Below we explore the potential causes and the ecological significance of these warming effects on lizard life history.

Compared to present climate conditions, a simulated warming climate significantly advanced the timing of reproduction (oviposition), which is a well-known phenomenon in the animal kingdom [4]. The advanced timing of reproduction is largely due to rapid accumulation of energy for reproduction and endocrine control of reproductive cycling induced by temperature increase [53, 63]. However, as found in some other lizard species

Table 2 Body size and locomotion of hatchling *Takydromus septentrionalis* from females exposed to different maternal thermal treatments

Trait	Present climate	Warming climate	Mixed-model ANOVA
Snout-vent length (mm)	26.31 ± 0.11	26.66 ± 0.14	$F_{1, 2.02} = 0.46, P = 0.56$
Body mass (g)	0.39 ± 0.01	0.39 ± 0.01	$F_{1, 2.02} = 0.01, P = 0.95$
Average speed (cm/s)	56.45 ± 1.45	60.84 ± 1.79	$F_{1, 2.05} = 1.06, P = 0.41$
Sprint speed (cm/s)	69.14 ± 1.55	75.25 ± 1.92	$F_{1, 2.04} = 1.64, P = 0.33$

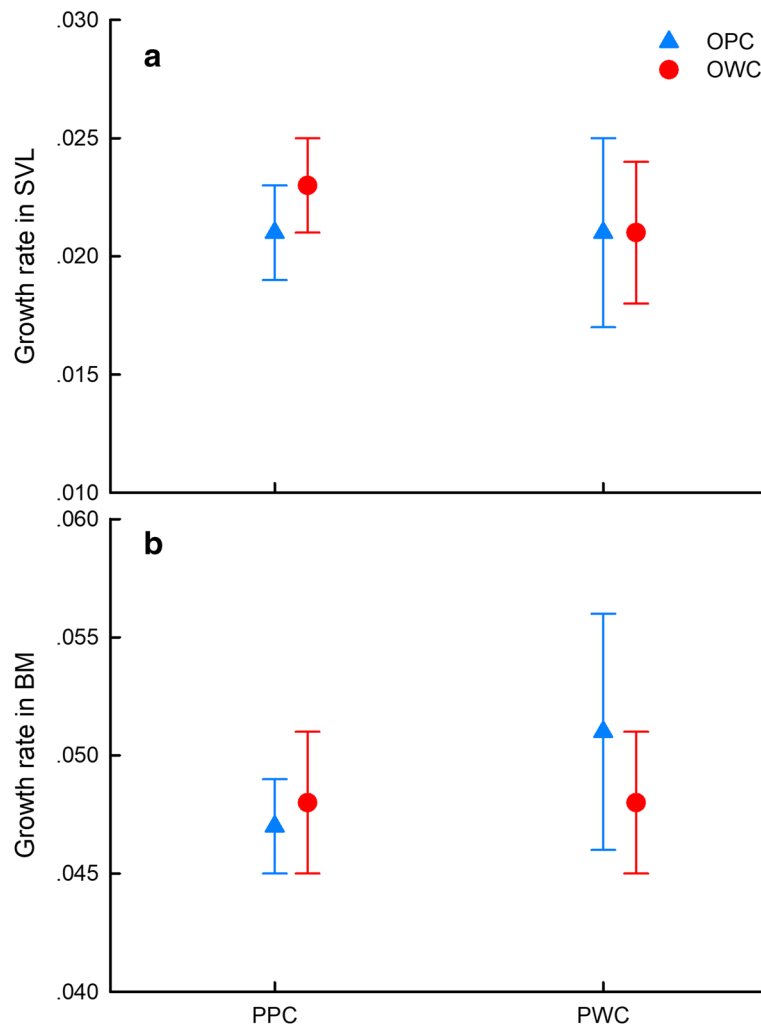
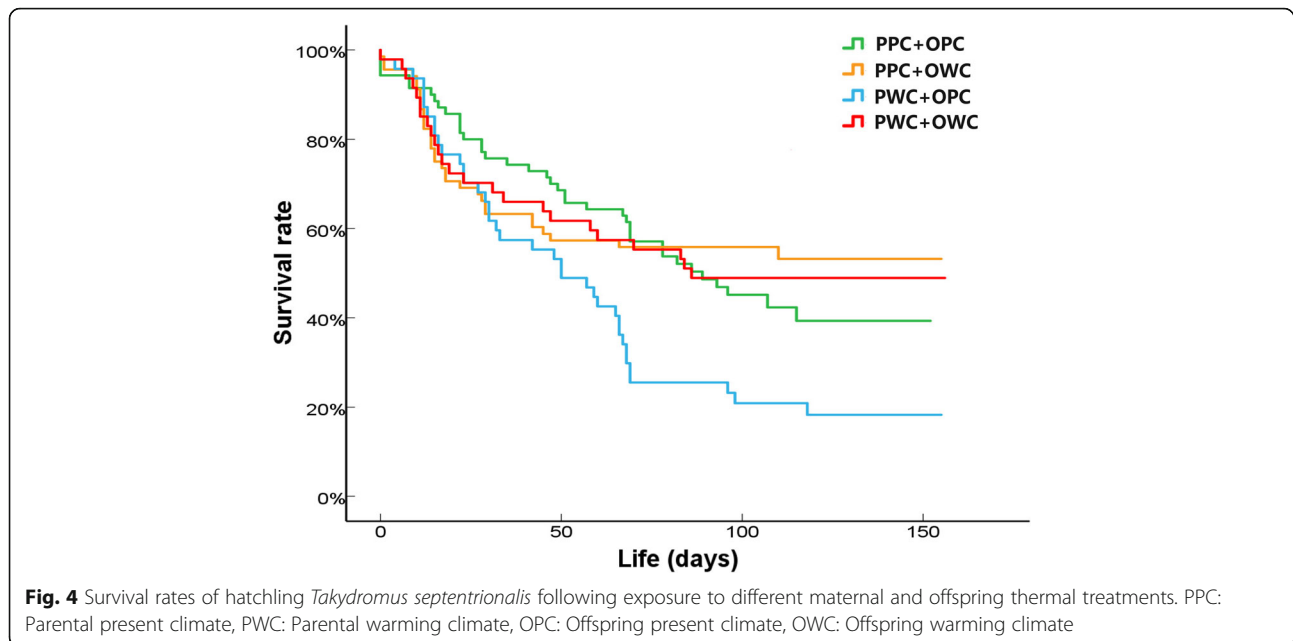


Fig. 3 Maximum growth rates in snout-vent length (a) and body mass (b) of hatchling *Takydromus septentrionalis* following exposure to different maternal and offspring thermal treatments. PPC: Parental present climate, PWC: Parental warming climate, OPC: Offspring present climate, OWC: Offspring warming climate

[41, 64, 65], a climate warming scenario did not affect clutch size or egg mass in the northern grass lizard, *T. septentrionalis*. Several reasons may account for the insensitivity of female reproductive output to climate warming in the northern grass lizard. First, active behavioral thermoregulation by female northern grass lizards can partially reduce the body temperature differential between lizards from a warming treatment and their conspecifics exposed to present climate conditions [58]. Similar use of behavioral thermoregulation to alleviate the effects of a warming climate has been shown in several other oviparous lizards (*Scincella modesta* and *Amphibolurus muricatus*) [18, 65]. Second, unlike some insects that can adjust the relationship between egg size and number on the basis of food quality [66, 67], female *T. septentrionalis* likely allocate optimal energy to a clutch of eggs and developing offspring, resulting in

relatively fixed egg and clutch sizes that are resistant to environmental perturbations such as thermal heterogeneity and food availability [19, 58, 68]. Nonetheless, a substantial increase in environmental temperatures may increase clutch frequency in *T. septentrionalis* [19] or clutch size in some other species [21, 41, 69]. Third, the low immune capability (Fig. 2b) of females from the warming climate treatment might be due to the high temperatures that directly depress the immunity, or induced by decreased energetic allocation to immunity, as a result of resource-allocation trade-offs between immunity and reproduction (e.g. [70, 71]). Additionally, as the terminal investment hypothesis predicts, expending a greater amount of energy resources on current reproduction rather than maintenance (and therefore potential future reproduction) is a strategy that would have selective advantages when animals perceive there to



be a higher probability of mortality and lower chances of reproducing in the future [72–74].

Our experiments indicated that when parents are exposed to a warming environment, embryo viability is significantly decreased, as shown by the low hatching success of eggs from these parents. This provides unequivocal evidence for the assertion that embryos are a fragile life history stage that might be extremely sensitive to climate change [75, 76]. The low viability of embryos could be directly attributable to the thermal environment experienced by embryos in utero, as embryos may be very sensitive to temperature at earlier developmental stages (e.g., cell differentiation and organ formation) (e.g., [77, 78]). Alternatively, temperature change may affect maternal investment (e.g., hormones, nutrition or immunity proteins) into an egg that may affect egg hatchability later [79].

Interestingly, we found that offspring from parents who experienced a warming environment survived well under a simulated warming climate, but not under a present climate. This is consistent with the prediction of the environmental matching hypothesis which suggests that the parental effect would be adaptive when the developmental conditions match post-developmental conditions, but detrimental when these conditions are mismatched [25, 80]. Nonetheless, the detrimental effect in our case was evident only when offspring from the parental warming climate treatment experienced present climate later, not when offspring from the parental present climate treatment experienced warming climate later. Parents that experience a warming climate anticipate that the offspring will also live in a warming environment, and thus ‘program’ their offspring phenotype accordingly, to boost offspring survival (as predicted by

the anticipatory parental effects) [25, 81, 82]. Similarly, parental thermal environment affects offspring growth in a fish, with higher growth rates in water temperatures matching those of their parents [40]. The ecological and evolutionary significance of this finding depends on the links between parental and offspring thermal conditions under climate change. In China, ambient temperatures are predicted to increase substantially in winter, spring, and autumn, but not in summer [83]. Under this predicted climate scenario, *T. septentrionalis* parents will experience a warming spring, but their hatchlings emerging in early summer will experience an unwarmed summer, and thus, the mismatch between parental (warm) and offspring (present) thermal environments may decrease offspring survival. In contrast, survival rates of hatchlings emerging in late summer would not be expected to decrease, because a warming autumn may enhance offspring survival despite gravid females experiencing a normal summer. Accordingly, the fitness consequences of anticipatory parental effects largely depend on seasonal variation in climate warming. Global change will increase temporal variation in climatic conditions [59], which could favor plasticity [30, 84], but also complicate the temporal matching between climate conditions and anticipatory parental effects. This makes any predictions about organismal fitness more complicated, and thus, further exploration on this subject would be of great interest to fully understand the impact of climate warming on organisms.

Conclusion

Overall, our findings of negative effects of warming on female immunity and embryonic development, and

the complex interaction between parental and offspring environments on offspring survival highlight the importance of taking multiple life-history stages into account when we evaluate the impact of climate warming on the fitness of a given species. In addition, our study demonstrates anticipatory parental effects in response to a warming climate in an ectothermic vertebrate, yet the final fitness consequences of these parental effects depend on future climate change scenarios. Although a growing body of evidence suggests that transgenerational plasticity plays an important role in species adaptation in thermally variable environments and may mediate impacts of climate change on both plants and animals [26, 31, 38, 39, 85], our results highlight that transgenerational effects could buffer the adaptive potential of ectothermic animals in thermally variable environments.

Additional files

Additional file 1: Ambient temperatures of sampling site and enclosure site, and the active body temperatures of lizards in enclosures. (DOCX 195 kb)

Additional file 2: Data used in this study. (XLSX 90 kb)

Abbreviations

OPC: Offspring present climate; OWC: Offspring warming climate; PHA: phytohemagglutinin; PPC: Parental present climate; PWC: Parental warming climate; SVL: Snout-vent length

Acknowledgements

We are grateful to Zhao B. and Meng, F. W. for their assistance in the field and laboratory.

Funding

This work was supported by grants from National Natural Science Fund of China (No. 31720103904, 31500324, 31525006 and 31372203).

Availability of data and materials

Additional materials and data in this study are available in Additional files 1 and 2 respectively.

Authors' contributions

SBJ, DWG designed the experiment; SBJ, WY, LHL conducted the experiments; WY and DWG analysed the data; SBJ, WY and DWG wrote the manuscript; all authors read and approved the manuscript for publication.

Ethics approval and consent to participate

Research was performed under approvals from the Animal Ethics Committee at the Institute of Zoology, Chinese Academy of Sciences (IOZ14001).

Competing interests

The authors declare that they have no competing interests.

Publisher's Note

Springer Nature remains neutral with regard to jurisdictional claims in published maps and institutional affiliations.

Author details

¹Key Laboratory of Animal Ecology and Conservation Biology, Institute of Zoology, Chinese Academy of Sciences, Beijing 100101, People's Republic of China. ²School of Biological Sciences, Hebei Normal University, Shijiazhuang, China. ³Hangzhou Key Laboratory of Animal Adaptation and Evolution,

Hangzhou Normal University, Hangzhou 310036, China. ⁴Center for Excellence in Animal Evolution and Genetics, Chinese Academy of Sciences, Kunming 650223, China.

Received: 14 September 2018 Accepted: 15 November 2018

Published online: 05 December 2018

References

1. Root TL, Price JT, Hall KR, Schneider SH, Rosenzweig C, Pounds JA. Fingerprints of global warming on wild animals and plants. *Nature*. 2003; 421:57–60.
2. Rosenzweig C, Karoly D, Vicarelli M, Neofotis P, Wu Q, Casassa G, Menzel A, Root TL, Estrella N, Seguin B, et al. Attributing physical and biological impacts to anthropogenic climate change. *Nature*. 2008;453:353–U320.
3. Urban MC. Accelerating extinction risk from climate change. *Science*. 2015; 348:571–3.
4. Parmesan C. Ecological and evolutionary responses to recent climate change. In: *Annual Review of Ecology Evolution and Systematics*. Volume 37; 2006. p. 637–69. *Annual Review of Ecology Evolution and Systematics*.
5. Chown SL, Hoffmann AA, Kristensen TN, Angilletta MJ Jr, Stenseth NC, Pertoldi C. Adapting to climate change: a perspective from evolutionary physiology. *Clim Res*. 2010;43:3–15.
6. Hoffmann AA, Sgro CM. Climate change and evolutionary adaptation. *Nature*. 2011;470:479–85.
7. Chen IC, Hill JK, Ohlemuller R, Roy DB, Thomas CD. Rapid range shifts of species associated with high levels of climate warming. *Science*. 2011;333: 1024–6.
8. Seebacher F, White CR, Franklin CE. Physiological plasticity increases resilience of ectothermic animals to climate change. *Nat Clim Chang*. 2015;5:61–6.
9. Valladares F, Matesanz S, Guilhaumon F, Araújo MB, Balaguer L, Benito-Garzón M, Cornwell W, Gianoli E, van Kleunen M, Naya DE, et al. The effects of phenotypic plasticity and local adaptation on forecasts of species range shifts under climate change. *Ecology Lett*. 2014;17(11):1351–64.
10. Williams SE, Shoo LP, Isaac JL, Hoffmann AA, Langham G. Towards an integrated framework for assessing the vulnerability of species to climate change. *PLoS Biol*. 2008;6:2621–6.
11. Huey RB, Buckley LB, Du W. Biological buffers and the impacts of climate change. *Integr Zool*. 2018;13:349–54.
12. Via S, Gomulkiewicz R, Dejong G, Scheiner SM, Schlichting CD, Van Tienderen PH. Adaptive phenotypic plasticity: consensus and controversy. *Trends Ecol Evol*. 1995;10:212–7.
13. Pigliucci M. *Phenotypic plasticity: beyond nature and nurture*. Baltimore: Johns Hopkins University Press; 2001.
14. Pigliucci M, Murren CJ, Schlichting CD. Phenotypic plasticity and evolution by genetic assimilation. *J Exp Biol*. 2006;209:2362–7.
15. Lande R. Adaptation to an extraordinary environment by evolution of phenotypic plasticity and genetic assimilation. *J Evol Biol*. 2009;22:1435–46.
16. Mousseau TA, Fox CW. *Maternal effects as adaptations*. Oxford: Oxford University Press; 1998.
17. Uller T. Developmental plasticity and the evolution of parental effects. *Trends Ecol Evol*. 2008;23:432–8.
18. Schwanz LE. Parental thermal environment alters offspring sex ratio and fitness in an oviparous lizard. *J Exp Biol*. 2016;219:2349–57.
19. Du WG, Lu YW, Shen JY. The influence of maternal thermal environments on reproductive traits and hatchling traits in a Lacertid lizard, *Takydromus septentrionalis*. *J Therm Biol*. 2005;30:153–61.
20. Marshall DJ. Transgenerational plasticity in the sea: context-dependent maternal effects across the life history. *Ecology*. 2008;89:418–27.
21. Wang Y, Zeng ZG, Li SR, Bi JH, Du WG. Low precipitation aggravates the impact of extreme high temperatures on lizard reproduction. *Oecologia*. 2016;182:961–71.
22. Wang Y, Li SR, Zeng ZG, Liang L, Du WG. Maternal food availability affects offspring performance and survival in a viviparous lizard. *Funct Ecol*. 2017; 31:1950–6.
23. Reed TE, Schindler DE, Waples RS. Interacting effects of phenotypic plasticity and evolution on population persistence in a changing climate. *Conserv Biol*. 2011;25:56–63.
24. Parker LM, Ross PM, O'Connor WA, Borysko L, Raftos DA, Portner HO. Adult exposure influences offspring response to ocean acidification in oysters. *Glob Chang Biol*. 2012;18:82–92.

25. Mousseau TA, Fox CW. The adaptive significance of maternal effects. *Trends Ecol Evol.* 1998;13:403–7.
26. Agrawal AA. Transgenerational consequences of plant responses to herbivory: an adaptive maternal effect? *Am Nat.* 2001;157:555–69.
27. Ghalambor CK, McKay JK, Carroll SP, Reznick DN. Adaptive versus non-adaptive phenotypic plasticity and the potential for contemporary adaptation in new environments. *Funct Ecol.* 2007;21:394–407.
28. Donelson JM, Munday PL, McCormick MI. Parental effects on offspring life histories: when are they important? *Biol Lett.* 2009;5:262–5.
29. Anderson JT, Gezon ZJ. Plasticity in functional traits in the context of climate change: a case study of the subalpine forb *Boechera stricta* (Brassicaceae). *Glob Chang Biol.* 2015;21:1689–703.
30. Nicotra AB, Atkin OK, Bonser SP, Davidson AM, Finnegan EJ, Mathesius U, Poot P, Purugganan MD, Richards CL, Valladares F, van Kleunen M. Plant phenotypic plasticity in a changing climate. *Trends Plant Sci.* 2010;15:684–92.
31. Donelson JM, Munday PL. Transgenerational plasticity mitigates the impact of global warming to offspring sex ratios. *Glob Chang Biol.* 2015;21:2954–62.
32. Sparks MM, Westley PAH, Falke JA, Quinn TP. Thermal adaptation and phenotypic plasticity in a warming world: insights from common garden experiments on Alaskan sockeye salmon. *Glob Chang Biol.* 2017;23:5203–17.
33. Charmantier A, McCreery RH, Cole LR, Perrins C, Kruuk LEB, Sheldon BC. Adaptive phenotypic plasticity in response to climate change in a wild bird population. *Science.* 2008;320:800–3.
34. Kramer K. Phenotypic plasticity of the phenology of seven European tree species in relation to climatic warming. *Plant Cell Environ.* 2010;18:93–104.
35. Chuine I, Beaubien EG. Phenology is a major determinant of tree species range. *Ecol Lett.* 2001;4:500–10.
36. DeWitt TJ, Scheiner SM. Phenotypic plasticity: functional and conceptual approaches. Oxford: Oxford University Press; 2004.
37. Visser ME, Both C. Shifts in phenology due to global climate change: the need for a yardstick. *Proc R Soc B Biol Sci.* 2005;272:2561–9.
38. Shama LNS, Strobel A, Mark FC, Wegner KM. Transgenerational plasticity in marine sticklebacks: maternal effects mediate impacts of a warming ocean. *Funct Ecol.* 2014;28:1482–93.
39. Crozier LG, Hutchings JA. Plastic and evolutionary responses to climate change in fish. *Evol Appl.* 2014;7:68–87.
40. Salinas S, Munch SB. Thermal legacies: transgenerational effects of temperature on growth in a vertebrate. *Ecol Lett.* 2012;15:159–63.
41. Bestion E, Teysseier A, Richard M, Clobert J, Cote J. Live fast, die young: experimental evidence of population extinction risk due to climate change. *PLoS Biol.* 2015;13:2281.
42. Sinervo B, Mendez-de-la-Cruz F, Miles DB, Heulin B, Bastiaans E, Villagran-Santa Cruz M, Lara-Resendiz R, Martinez-Mendez N, Lucia Calderon-Espinosa M, Nelsi Meza-Lazaro R, et al. Erosion of lizard diversity by climate change and altered thermal niches. *Science.* 2010;328:894–9.
43. Huey RB, Deutsch CA, Tewksbury JJ, Vitt LJ, Hertz PE, Álvarez Pérez HJ, Garland T. Why tropical forest lizards are vulnerable to climate warming. *Proc R Soc B Biol Sci.* 2009;276:1939–48.
44. Ma L, Sun BJ, Li SR, Sha W, Du WG. Maternal thermal environment induces plastic responses in the reproductive life history of oviparous lizards. *Physiol Biochem Zool.* 2014;87:677–83.
45. Noble DWA, Stenhouse V, Schwanz LE. Developmental temperatures and phenotypic plasticity in reptiles: a systematic review and meta-analysis. *Biol Rev.* 2018;93:72–97.
46. Chamaille-Jammes S, Massot M, Aragon P, Clobert J. Global warming and positive fitness response in mountain populations of common lizards *Lacerta vivipara*. *Glob Chang Biol.* 2006;12:392–402.
47. Olsson M, Schwartz T, Wapstra E, Uller T, Ujvari B, Madsen T, Shine R. Climate change, multiple paternity and offspring survival in lizards. *Evolution.* 2011;65:3323–6.
48. Gluckman PD, Hanson MA, Spencer HG. Predictive adaptive responses and human evolution. *Trends Ecol Evol.* 2005;20:527–33.
49. Nettle D, Frankenhuys WE, Rickard IJ. The evolution of predictive adaptive responses in human life history. *Proc R Soc B Biol Sci.* 2013;280.
50. Monaghan P. Early growth conditions, phenotypic development and environmental change. *Phil Trans R Soc B.* 2008;363(1497):1635–45.
51. Sun BJ, Ma L, Li SR, Williams CM, Wang Y, Hao X, Du WG. Phenology and the physiological niche are co-adapted in a desert dwelling lizard. *Funct Ecol.* 2018;32:2520–30.
52. Zhao E, Adler K. Herpetology of China. SSAR: Oxford; 1993.
53. Ji X, Du WG, Sun PY. Body temperature, thermal tolerance and influence of temperature on sprint speed and food assimilation in adult grass lizards, *Takydromus septentrionalis*. *J Therm Biol.* 1996;21:155–61.
54. Ji X, Du WG, Lin ZH, Luo LG. Measuring temporal variation in reproductive output reveals optimal resource allocation to reproduction in the northern grass lizard, *Takydromus septentrionalis*. *Biol J Linn Soc.* 2007;91:315–24.
55. Cai Y, Yan J, Xu XF, Lin ZH, Ji X. Mitochondrial DNA phylogeography reveals a west–east division of the northern grass lizard (*Takydromus septentrionalis*) endemic to China. *J Zool Syst Evol Res.* 2012;50:137–44.
56. Shine R. Reptilian reproductive modes - the oviparity-viviparity continuum. *Herpetologica.* 1983;39:1–8.
57. Du WG, Ji X. Effects of constant and fluctuating temperatures on egg survival and hatchling traits in the northern grass lizard (*Takydromus septentrionalis*, Lacertidae). *J Exp Zool.* 2006;305A:47–54.
58. Zhu LJ, Du WG, Sun B, Zhang YP. The effects of short-term warming on reproduction, egg incubation and hatchling traits in the northern grass lizard, *Takydromus septentrionalis*. *Acta Ecol Sin.* 2010;30:4848–54.
59. IPCC. Climate change 2013: the physical science basis. Contribution of Working Group I to the Fifth Assessment Report of the Intergovernmental Panel on Climate Change. Cambridge: Cambridge University Press; 2013.
60. Ji X, Du WG. The effects of thermal and hydric environments on hatching success, embryonic use of energy and hatching traits in a colubrid snake, *Elaphe carinata*. *Comp Biochem Physiol A Mol Integr Physiol.* 2001;129:461–71.
61. Michal V, Hana B, Tomáš A. Functional analysis of the skin-swelling response to phytohaemagglutinin. *Funct Ecol.* 2010;24:1081–6.
62. Fitzhugh HA. Analysis of growth curves and strategies for altering their shape. *J Anim Sci.* 1976;42:1036–51.
63. Pierantoni R, Varriale B, Fasano S, Minucci S, Dimatteo L, Chieffi G. Seasonal plasma and Intraovarian sex steroid profiles, and influence of temperature on gonadotropin stimulation of In vitro Estradiol-17-Beta and Progesterone production, in *Rana Esculenta* (Amphibia, Anura). *Gen Comp Endocrinol.* 1987;67:163–8.
64. Clarke DN, Zani PA. Effects of night-time warming on temperate ectotherm reproduction: potential fitness benefits of climate change for side-blotched lizards. *J Exp Biol.* 2012;215:1117–27.
65. Lu HL, Wang Y, Tang WQ, Du WG. Experimental evaluation of reproductive response to climate warming in an oviparous skink. *Integr Zool.* 2013;8:175–83.
66. Ebert D. The trade-off between offspring size and number in daphnia-magna - the influence of genetic, environmental and maternal effects. *Archiv Fur Hydrobiologie.* 1993;453–73.
67. Czesak ME, Fox CW. Evolutionary ecology of egg size and number in a seed beetle: genetic trade-off differs between environments. *Evolution.* 2003;57:1121–32.
68. Du WG. Phenotypic plasticity in reproductive traits induced by food availability in a lacertid lizard, *Takydromus septentrionalis*. *Oikos.* 2006;112:363–9.
69. Rutschmann A, Miles DB, Clobert J, Richard M. Warmer temperatures attenuate the classic offspring number and reproductive investment trade-off in the common lizard, *Zootoca vivipara*. *Biol Lett.* 2016;12:20160101.
70. Ardia DR. Tree swallows trade off immune function and reproductive effort differently across their range. *Ecology.* 2005;86:2040–6.
71. Sanz JJ, Eacote, Moreno J, Merino S, Tom, aacute, s G: A trade-off between two resource-demanding functions: post-nuptial moult and immunity during reproduction in male pied flycatchers. *J Anim Ecol* 2010, 73:441–447.
72. Velando A, Drummond H, Torres R. Senescent birds redouble reproductive effort when ill: confirmation of the terminal investment hypothesis. *Proc R Soc B Biol Sci.* 2006;273:1443–8.
73. Cluttonbrock TH. Reproductive effort and terminal investment in iteroparous animals. *Am Nat.* 1984;123:212–29.
74. Bowers EK, Bowden RM, Sakaluk SK, Thompson CF. Immune activation generates corticosterone-mediated terminal reproductive investment in a wild bird. *Am Nat.* 2015;185:769–83.
75. Lorigou S, DeNardo DF, Gorelick R, Lourdaís O. Maternal influences on early development: preferred temperature prior to oviposition hastens embryogenesis and enhances offspring traits in the Children's python, *Antaresia childreni*. *J Exp Biol.* 2012;215:1346–53.
76. Du WG, Shine R. The behavioural and physiological strategies of bird and reptile embryos in response to unpredictable variation in nest temperature. *Biol Rev.* 2015;90:19–30.

77. Brana F, Ji X. The selective basis for increased egg retention: early incubation temperature determines hatchling phenotype in wall lizards (*Podarcis muralis*). *Biol J Linn Soc.* 2007;92:441–7.
78. Sun BJ, Li T, Gao J, Ma L, Du WG. High incubation temperatures enhance mitochondrial energy metabolism in reptile embryos. *Sci Rep.* 2015;5:8861.
79. Deeming DC, Ferguson MWJ. Egg incubation: its effect on embryonic development in birds and reptiles. Cambridge: Cambridge University Press; 1991.
80. Bernardo J. Maternal effects in animal ecology. *Am Zool.* 1996;36:83–105.
81. Uller T, Nakagawa S, English S. Weak evidence for anticipatory parental effects in plants and animals. *J Evol Biol.* 2013;26:2161–70.
82. Burgess SC, Marshall DJ. Temperature-induced maternal effects and environmental predictability. *J Exp Biol.* 2011;214:2329–36.
83. Ding Y, Ren GY, Zhao ZC, Xu Y, Luo Y, Li QP, Jing Z. Detection, attribution and projection of climate change over China. *Desert Oasis Meteorol.* 2007;1:1–10.
84. Chevin L-M, Lande R, Mace GM. Adaptation, plasticity, and extinction in a changing environment: towards a predictive theory. *PLoS Biol.* 2010;8(4): e1000357.
85. Latzel V, Janecek S, Dolezal J, Klimesova J, Bossdorf O. Adaptive transgenerational plasticity in the perennial *Plantago lanceolata*. *Oikos.* 2014; 123:41–6.

Ready to submit your research? Choose BMC and benefit from:

- fast, convenient online submission
- thorough peer review by experienced researchers in your field
- rapid publication on acceptance
- support for research data, including large and complex data types
- gold Open Access which fosters wider collaboration and increased citations
- maximum visibility for your research: over 100M website views per year

At BMC, research is always in progress.

Learn more biomedcentral.com/submissions

